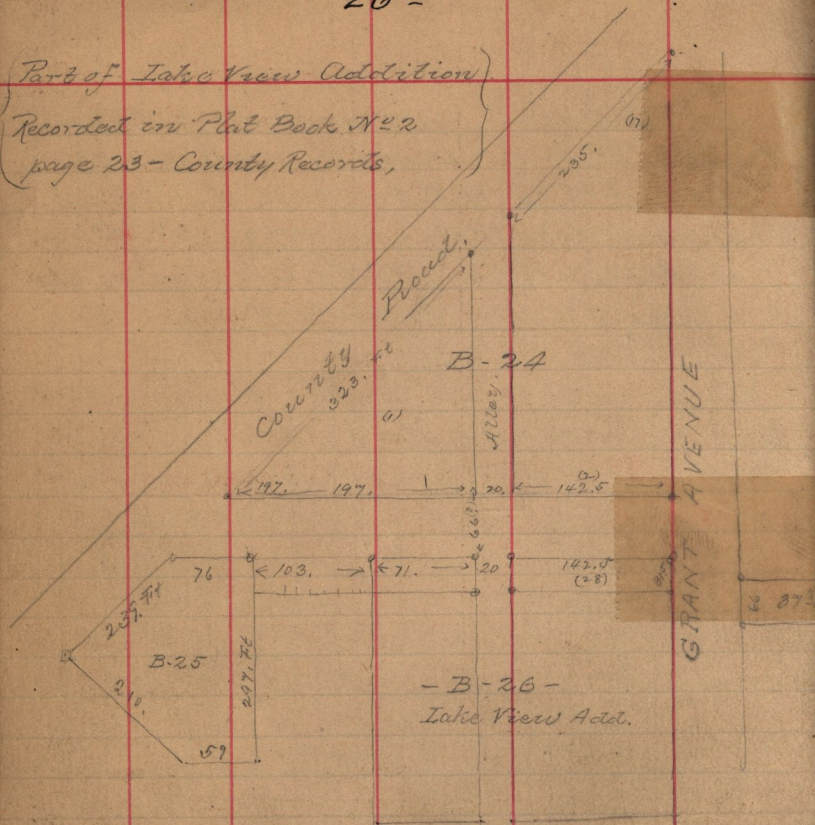


Part of Lake View Addition
 Recorded in Plat Book No 2
 page 23 - County Records,



Amended Dedication of Lake View Adcl to Open
 City, Recorded in Book 3 of Deeds, page 245,

At Sec. 4 & 5, in T. 5. N. R. 1. W. Reg. 1963 ch S. of N. E. cor Sec 5
 N. 89°-15' W. 12.07 ch to cent. St. S. 02°-58' W. 5.39 ch, S 35°-21' W.
 34.74 ch, S 51°-39' E. 3.19 ch, E 0.90 ch, N 4.52 ch, N 89°-16'
 7.81 ch, S 57.73 ch, E. 11.85 ch, S 7.45 ch, W. 14.29 ch S 13° W
 5.80 ch, S 43°-58' E 1.85 ch, S 50°-46' E 17.37 ch, S 23°-38' E 0.0
 ch, E. 18.17 ch, to S. E. Cor. Sec 5. N. 6.25 ch, E. 20. ch, N 33.75
 more or less to 1/4 Sec. line, N. 5.75 ch N. 30. ch, W. 9.25 ch
 S. 10. ch, W. 5. ch, to beg. dated Aug. 12-1889 -
 recorded Aug. 21-1889,